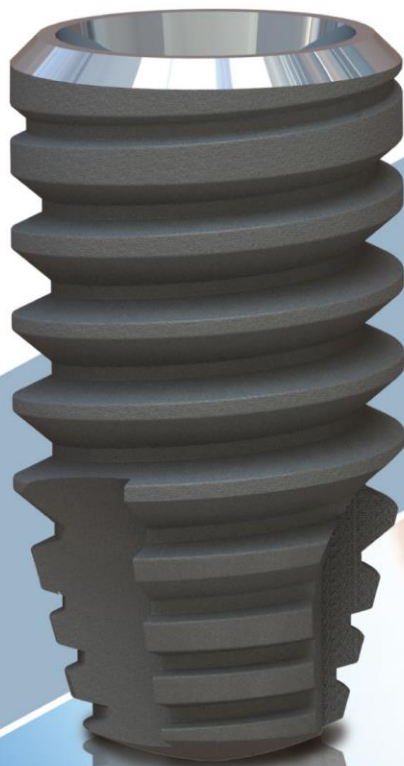


2020
Version

DPI

DENTAL IMPLANTS
SYSTEM

*...Creating smiles
with a gentle touch...*



PARS SAMAN TEB
Exclusive Sales
Representative

FEATUERS & BENEFIT

Fixture

Two types of Bone level

GPI
DENTAL IMPLANTS
SYSTEM



With/Without polishing edge in cervical zone

Introducing a novel "SL3A" active surface with super hydrophilic properties lead to less than one month osseointegration.

- Various diameter: 3.7, 4, 4.5, 5 mm
- Various length: 8, 10, 12, 14 mm
- Suitable for treatment in beauty areas (Full esthetic)
- Excellent primary stability and easy insertion
- Compatible with maxillofacial anatomy with minimal bone loss
- No micro threads
- Having rough surface in the cervical zone
- Special design of macro threads to have high efficiency

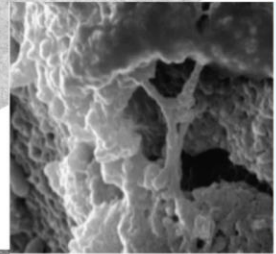


- Immediate loading
- Having stable and sealed biological connection
- Easy & risk-free surgery using stopper drills
- Complete and ease surgical kit of use
- Special design to platform switching
- Bone level implants in various diameters and lengths with the ability to be used in a variety of bone type
- Internal HexConnection

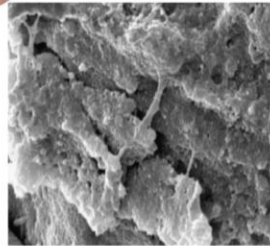


Micro Surface Design

Two types of treated surface



SL2A

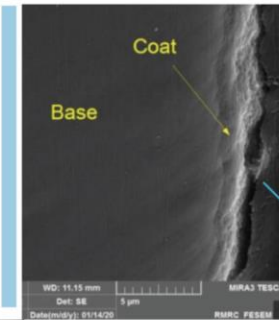


SL3A

Active SL3A surface
Non-active SL2A. surface

MTT Test Result

- Sandblasting Large Grit Acid etching Anodizing Active (SL3A)
- An oxygen-carbon free packaging
- Rapid osseointegration up to the 4 weeks
- Sandblasting Large Grit Acid etching Anodizing (SL2A)
- About 5-10 microns porosity
- Categorized in rough implant
- Osseointegration within 8 weeks



Super Hydrophilic Surface

SEM Image, 10k. X 5 micron TiO2 coating



OPI
DENTAL IMPLANTS
SYSTEM

Abutment & Screw

Static Strength above 45 kg



More than 5 million fatigue life cycle

- Smooth surface
- Various diameter : 4.5 , 5.5 mm
- Optimum P.H Different taper angle (5°, 6°, 15°, 25°)
- Various P.H: 5 , 7 mm
- Various C.H:1,2,3 mm
- Mono connection abutment can be used on any size of fixture
- Small but strong abutment screw
- Thicker abutment wall More favorable for path adjustment
- Biologic S-Line provide seamless Natural looking - Emergence profile
- 11° Taper connection.
- Hex-Type compatible connection
- Support the 1.2 implants hex driver.

GPI
DENTAL IMPLANTS
SYSTEM



TS System



DENTAL IMPLANTS SYSTEM



● **Ball Abutment**
Diameter: 4.5, 5.5mm
Height: 12mm



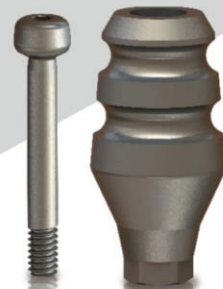
● **Analog**
Diameter: 4.5mm
Height: 12mm



● **Cover Screw**
Diameter: 4.5mm
Height: 6.3mm



● **Healing Abutment**
Various diameter: 4.5, 5.5 mm
Various G/H: 2, 3, 4, 5, 6 mm



● **Impression Coping (Transfer)**
Various diameter: 4.5, 5.5 mm
Height: 11mm



● **Impression Coping (Pick-up)**
Various diameter: 4.5, 5.5 mm
Height: 11mm



● **UCLA Plastic Abutment**
Various diameter: 4.5, 5.5 mm



● **UCLA Chrome Plastic Abutment**
Various diameter: 4.5, 5.5 mm



DPI

DENTAL IMPLANTS SYSTEM

www.Dorinkasht.com
info@Dorinkasht.com

Head office :
#6A, No.3, Sarshar Allay, Vali-e- Asr Ave.
Tajrish Sq, Tehran-IRAN
Tel: (+98 21) 2274 94 58